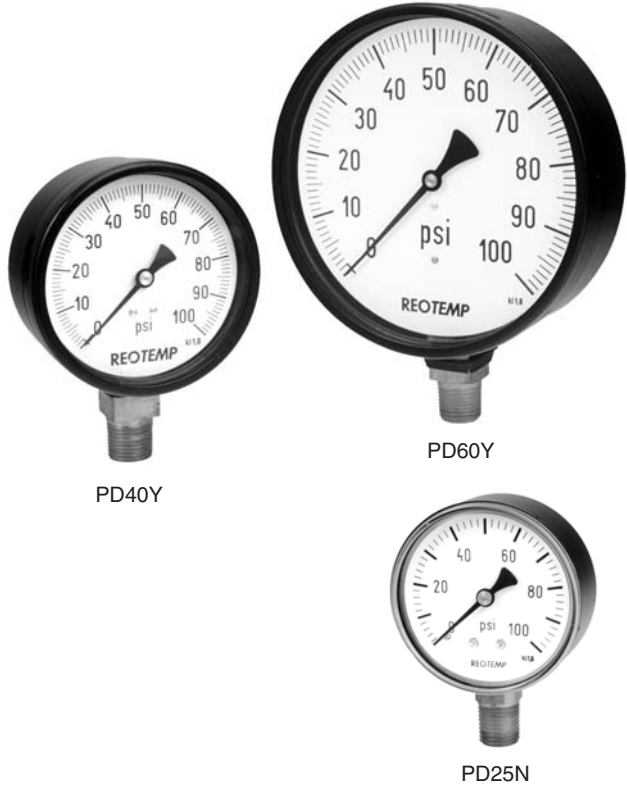


SERIES PD

GENERAL PURPOSE GAUGES (DRY)



- Black Steel or Stainless Cases
- Copper Alloy Wetted Parts
- Cost Effective Design
- Standard 3-2-3% Accuracy

Specifications

- Case:** Black Painted Steel or Stainless Steel
- Ring:** Snap-In Window, Push-On Bezel, or Bayonet
- Lens:** Snap-In Plastic or Glass
- Dial:** Aluminum, Black Figures on White Background
- Wetted Parts:** Copper Alloy
- Temperature:** -10° to 140°F
- Accuracy:** 3-2-3% (1.6% Available)

Applications

The PD Series offers a wide variety of economical gauges for applications where ambient or process corrosion are not of concern. Suitable for non-vibrating applications. More economical movements are available where 1.6% accuracy is not required.

HOW TO ORDER

PD — **40** — **Y** — **2** — **C** — **2** — **P23**

Dial:	Case:	Tube & Socket:	Mounting:	Connection:	Range Code:
15 = 1.5" 20 = 2" 25 = 2.5" 30 = 3" 40 = 4" 60 = 6"	N = Black Steel Snap-In Plastic Lens (1.5", 2", 2.5" Dial) X = St. Steel Snap-In Plastic Lens (1.5", 2", 2.5" Dial) B = Blk Steel Push-On Bezel with glass window (1.5", 2", 2.5", 3", 4" Dial) Z = St. Steel Push-On Bezel with glass window (1.5", 2", 2.5" Dial) Y = Blk Steel Bayonet Removable Glass Lens (4", 6" Dial) S = St. Steel Bayonet Removable Glass Lens (4", 6" Dial)	2 = Copper Alloy	A = Bottom B = Bottom/Rear Flange (2.5", 3", 4", 6") C = Back (1.5", 2", 2.5") (4", 6") D = Back /"U" or "O" Clamp (not avail. on "y" case) E = Back/Front Flange (2.5") (4", 6")	8 = 1/8" NPT (1.5", 2", 2.5") 4 = 1/4" NPT (All Sizes) 2 = 1/2" NPT (4", 6")	See Page 14 for Range Codes Available Ranges: All ranges from vacuum to 6,000 p.s.i. (1.5", max = 600 p.s.i.) (2", max = 3,000 p.s.i.)
				Options: <ul style="list-style-type: none"> • Custom / Logo Dials • Restrictor Screw • High Temperatures (up to 380°F) 	